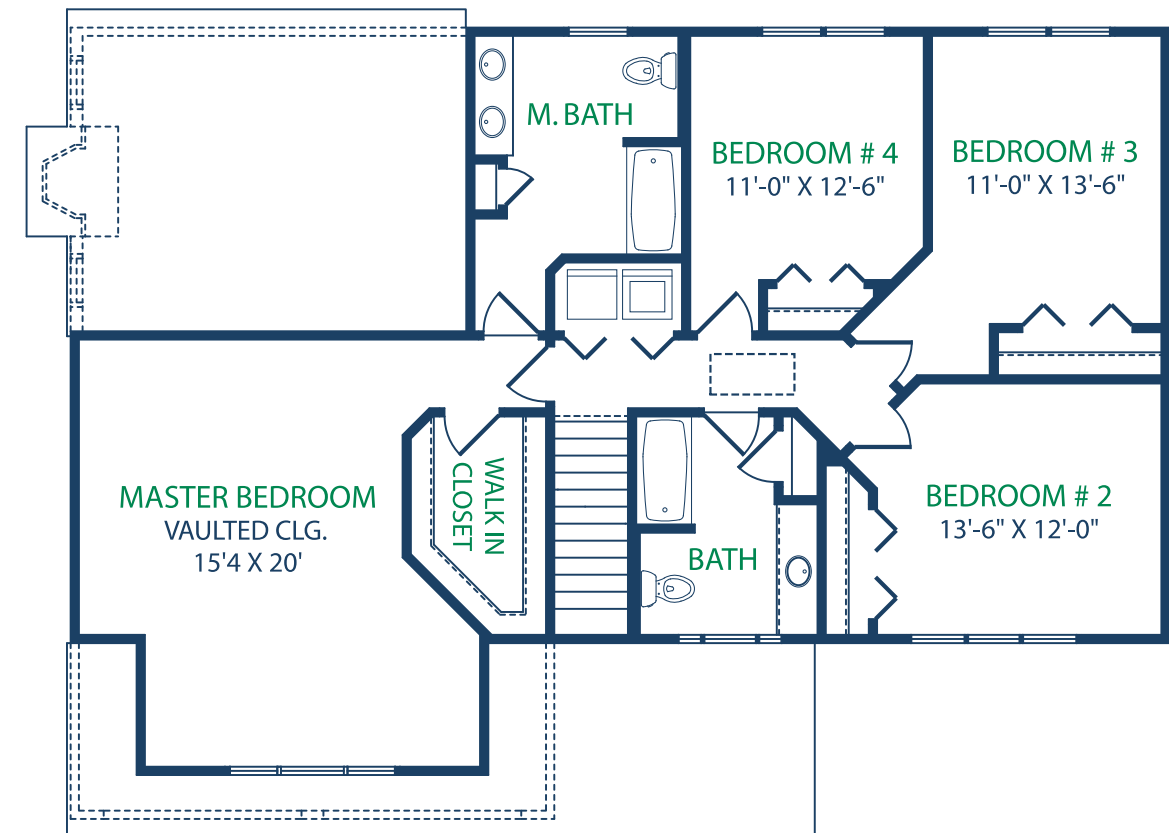
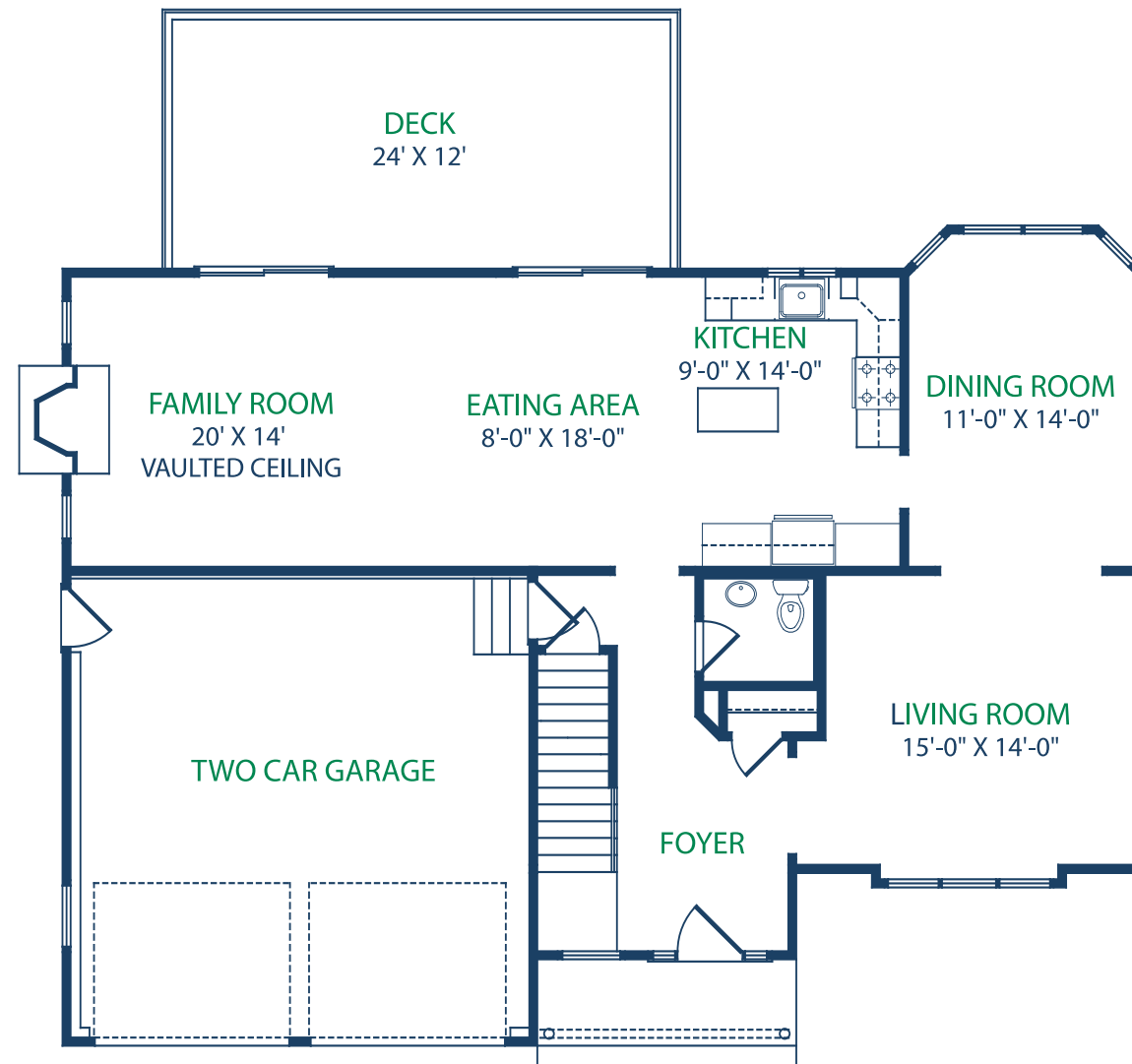


The Whitin FLOOR PLAN

TOTAL: 2,388 SQ. FT.

1ST FLOOR
1,158 SQ. FT.

2ND FLOOR
1,230 SQ. FT.



The dimensions, size, configurations, and other information contained in this floor plan are meant to be illustrative only, are not to scale, and are subject to change without notice. 8/07